

# The Lost City of C



## Your team roles:

Choose a job for each of your team (not on this list!)

Dog-Trainer

Babysitter

Financial-Consultant

Lawyer

Illustrator

Cheese-Maker

Dentist

Librarian



**CAMBRIDGE**  
UNIVERSITY PRESS



**Cambridge Assessment**  
English

# Your survival kit:

Choose ten items. Think about these categories:



light



repair



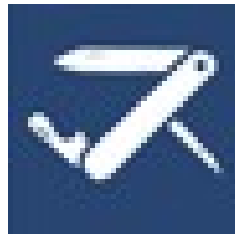
fire  
starting



signalling  
navigation



comms



tools



shelter



heating  
cooking



first aid



water



food



power



**CAMBRIDGE**  
UNIVERSITY PRESS

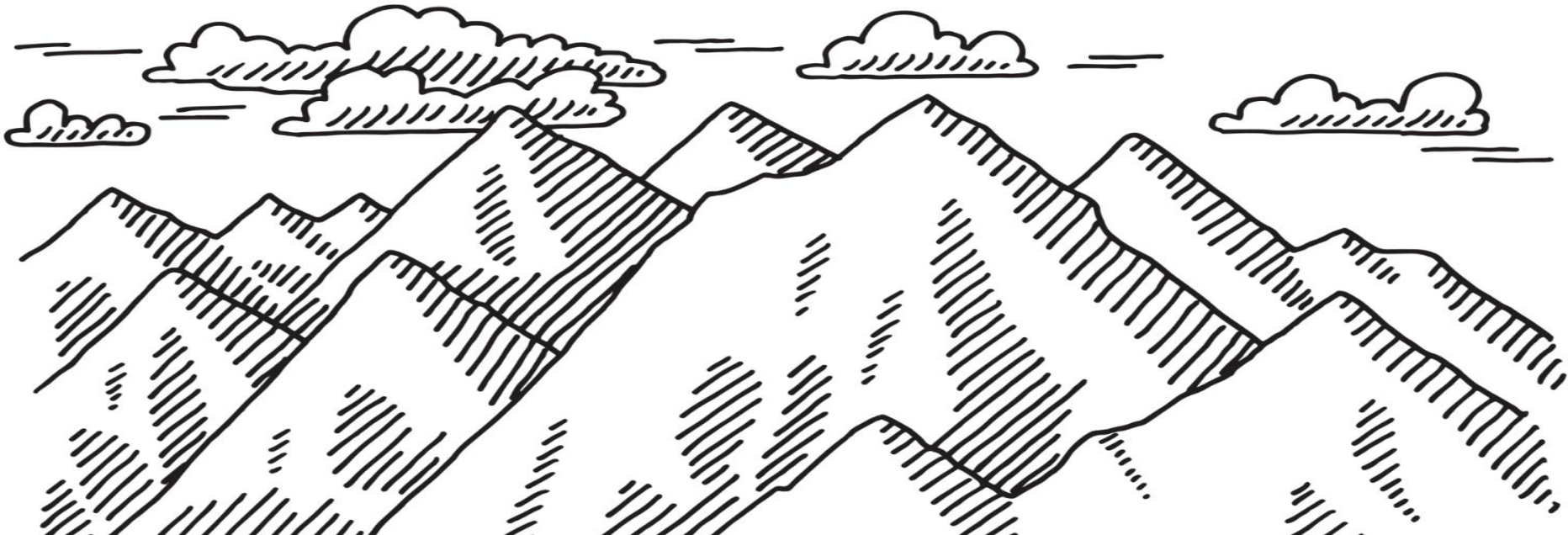


**Cambridge Assessment**  
English

# **The expedition begins ...**

Each team starts with 10 expedition points.

The teams left with points at the end will have successfully accomplished their mission!



*Day 1 – We set off on our expedition at noon, full of high spirits. The weather was pleasant but soon the winds changed and we found ourselves in a snow storm, paralysed by the icy winds we ...*



Did your team remember a tent or shelter?

If not, lose one expedition point.



*Day 7 – After the awful winds of the past few days we were relieved to see the sun breaking through the clouds as we woke this morning. At around midday, whilst trekking along the ice, I felt a sudden crack beneath my feet, the last thing I remember was falling ...*



Did your team pack a rope or something to help you escape?

If not, lose one expedition point.



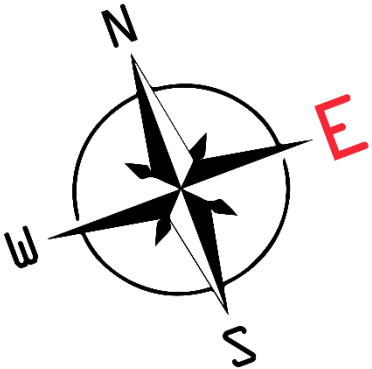
**CAMBRIDGE**  
UNIVERSITY PRESS



**Cambridge Assessment**  
English



*Day 12 – The bad fall a few days ago has made me very cautious, I'm taking extra care with every step. We decided to avoid the same problem happening again by **changing our route, turning to the east we ...***

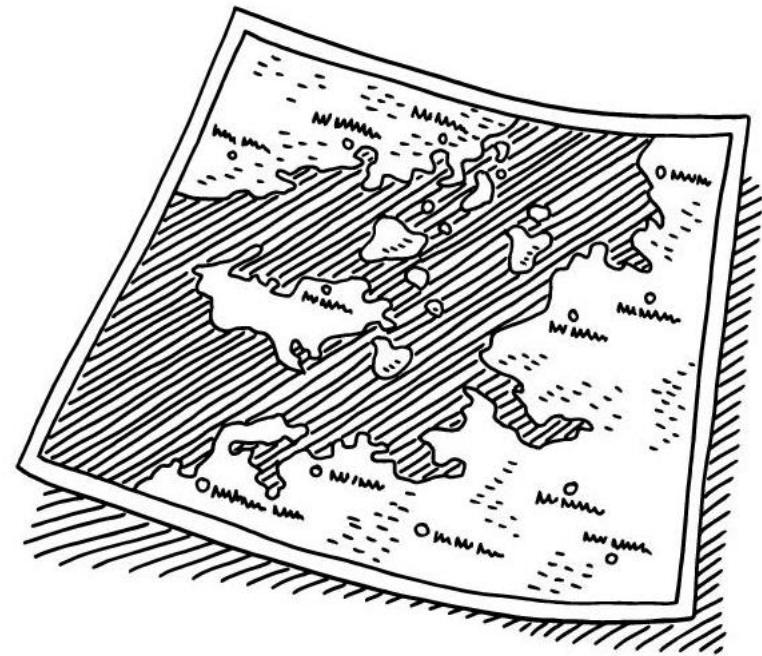


Did your team pack a compass or a map? Do you have a navigator in your team?

If not, lose one expedition point.

If you have both, add a point!

All 3 = 3 points!



*Day 19 – Finally some good news from this mission, today we spotted what looked like a flowering red plant, on later inspection we discovered it was algae. **A great Discovery**, one to report back to our colleagues in ...*

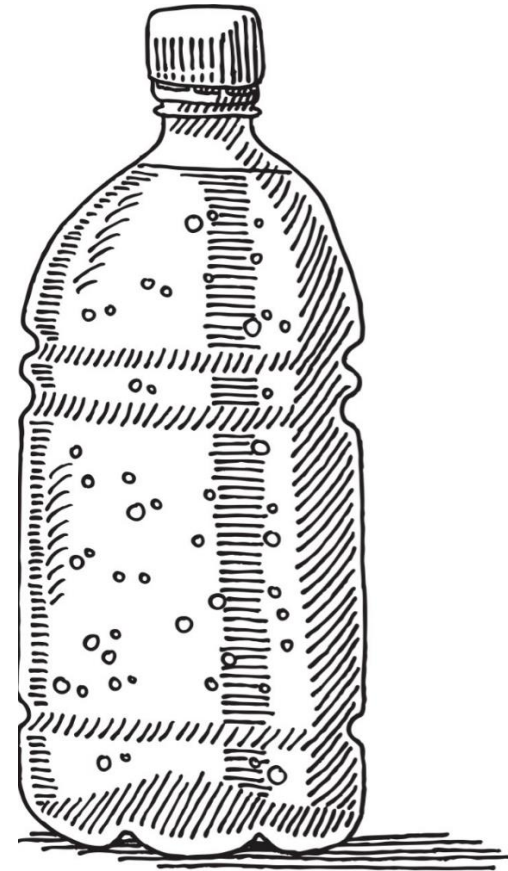


Did your team pack a camera or do you have a botanist in the team?

If not, lose one expedition point.  
If you have both, add a point!



*Day 22 – The algae continues to make an impression, our team member who collected it has been suffering from nausea. We fear that **the water may have been contaminated** ...*



Did your team pack water purification tables?  
Do you have a doctor, nurse or medic in your  
team?

If not, lose one expedition point.  
If you have both, add a point!



*Day 25 – Spirits have been low the past few days as we have battled icy winds and snow storms. We decided it was time to take shelter and try to **lift the spirits with some light relief** ...*



**CAMBRIDGE**  
UNIVERSITY PRESS



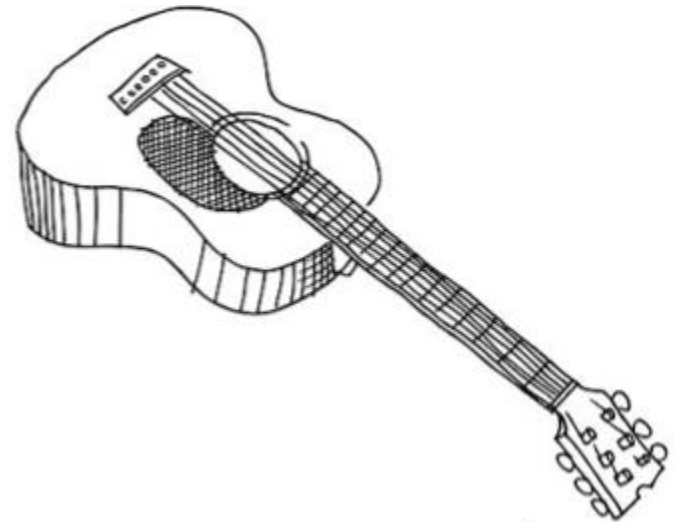
**Cambridge Assessment**  
English

Did your team pack a musical instrument or a game? Or did you have an entertainer in the team?

If not, lose one expedition point.

If you have both, add a point!

All 3 = 3 points!





*Day 30 – As we passed over the final peak we saw an image in the distance, a figure we did not recognise, and in the background the shadow of a city, one like I have never set eyes on before. With a deep breath and a determined look we took our first steps toward ...*

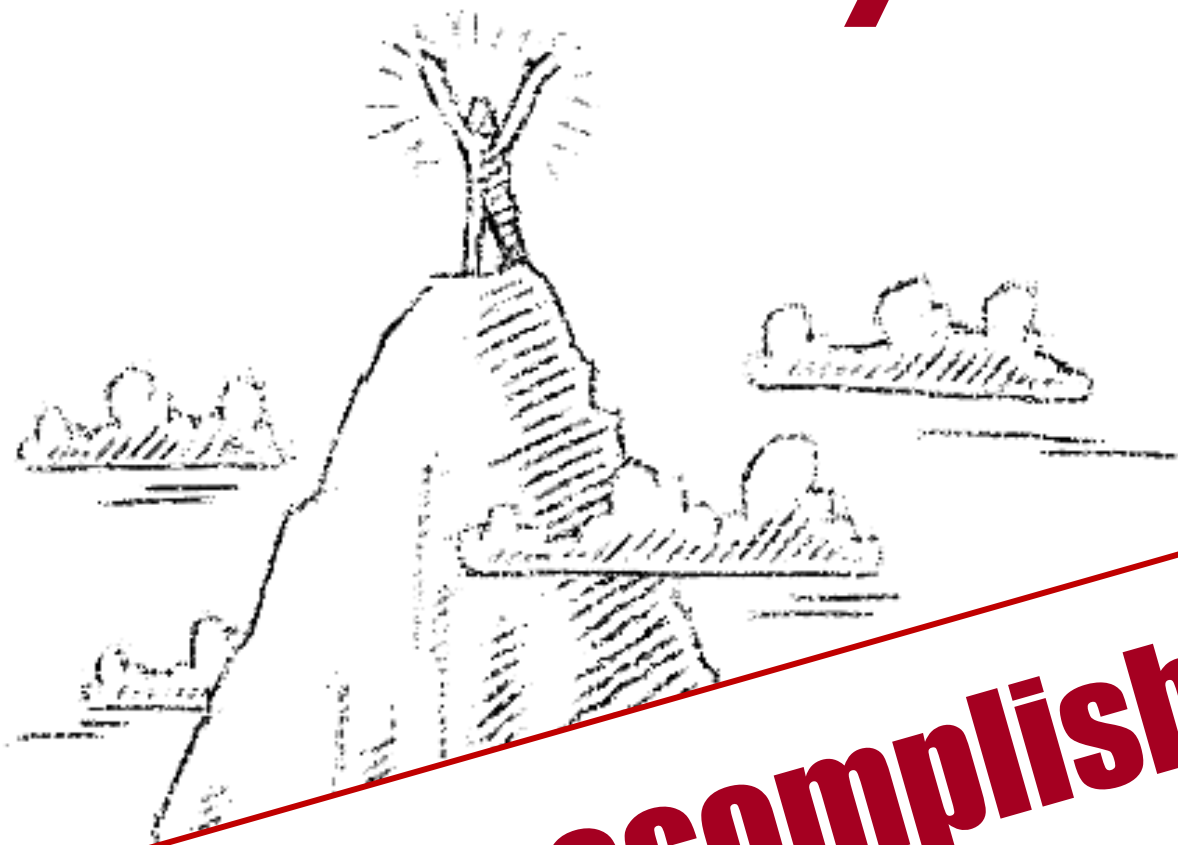


**CAMBRIDGE**  
UNIVERSITY PRESS



**Cambridge Assessment**  
English

# The Lost City of C



**Mission accomplished!**